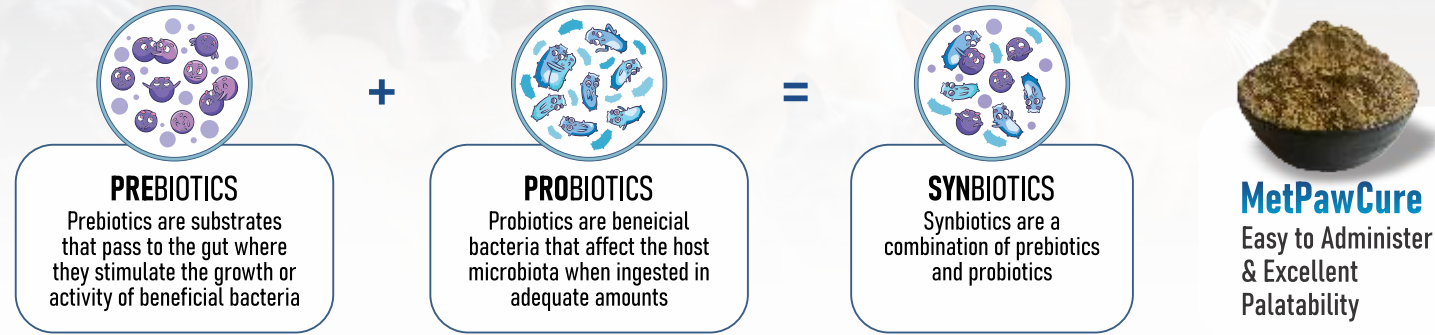


PET CARE PRODUCTS



Gut Health

- Probiotics to maintain a healthy Gut microbiome
- Promote intestinal health and maintain gut flora.

Digestive Health

- Support digestive health and boost immunity.
- Alleviate symptoms of diarrhoea, constipation, and bloating, ensuring your pet feels comfortable and happy.

Cardiac Health

- Supports Strong Muscles, Including a Healthy Heart
- Maintain positive cardiac activity during stressful events

Mental Health/ Soothes pets with anxious behaviours

- Helps support pet with anxious behaviours such as excessive vocalization, jumping, pacing, and spinning to maintain calm behaviour.
- Helps dogs cope with external stressors like separation, unfamiliar visitors, novel sounds, or changes in routine and location.



A GMP, ISO, HACCP, STAR-K KOSHAR, HALAL & FSSAI CERTIFIED COMPANY

Head Quarters:

9th Floor, Earth Arise, Nr. YMCA Club, S.G Highway, Makarba, Ahmedabad 380015, Gujarat, INDIA

T : +91 79 3533 3470/71

E : contact@meteoricbiopharma.com

USA:

Suite B-2, Morris Plains Business Park, 60 East Hanover, Ave Morris Plains NJ 07950

T : +1 732-585-5592

E : contactUSA@meteoricbiopharma.com

Vietnam:

Room 102, 91 No.5 Str, An Phu Ward, Thu Duc Dist, HCMC, Vietnam.

T : +84 933402434

E : vietnam@meteoricbiopharma.com

www.meteoricvet.in

www.linkedin.com/company/meteoricbiopharmaceuticals

AQUACULTURE



ADVANCED BIOLOGICAL FORMULA FOR WHITE GUT DISEASE AND AQUA MICROBIOME

MET PRO GUT is a multipurpose biological product contains a blend of synergistic and dynamic stable spore forming probiotics, stable vegetative set of probiotics, stable enzymes, essential amino acids, prebiotics and vitamin consortium.

- It secretes immune stimulants that activate the immune Systems of the animal.
- It produces critical nutrients and growth factors that Catalyse many biological processes.
- Enhances immune system of Post larvae, juveniles, and adult shrimp.
- Improves growth rate and better FCR, nutrient level, dissolved oxygen, blooming of Phyto plankton.



MULTISTRAIN SOIL AND WATER PROBIOTICS WITH GUT AND IMMUNE HEALTH

WATER AND SOIL HEALTH

- Met Pro Ultima protects the pond from pathogenic microorganisms.
- It keeps the pond bottom clean and makes the water pure by digesting sediments.

GUT HEALTH-IMMUNE SUPPORT

- Increases survival and production, It helps to enhancement of digestion through production of exoenzyme.
- Stimulates the gut immune system of fish with marked

DISEASE CONTROL

- Controls gastrointestinal disease, infectious disease by enhancing immune response in aquaculture.

TRUEMIN AQUA ORGANIC ESSENTIAL ORGANIC MINERALS

It is the essential macro and micro-organic minerals, Amino acid which helps in bio mineralization process in aqua culture pond, for growth of high-quality phytoplankton and to maintain proper alkalinity in pond water.

- Restores the mineral deficiency in soil and water and maintains healthy pond bottom
- Improves the moulting and quick formation of shell
- Provides relief from stress in pre/post moulting stages



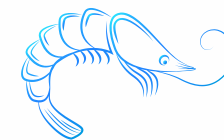
FAST ACTING OXYGEN RELEASING TABLETS FOR IMPROVED WATER ENVIRONMENT AND WATER QUALITY OF AQUA PONDS

- Prevent hypoxia when air pressure is low
- Improve water environment and water quality
- Increases biological improvement, increases food intake and treatment
- Kills cyanobacteria and absorbs decomposed pollutants



WITH PROBIOTICS - CONSISTENT COMBINATION TO REDUCE AMMONIA AND IMPROVE WATER QUALITY

- Improves water quality and consequently the farm productivity
- Reduces ammonia
- Improves digestion and growth



*Complete
Biological Solution*

POULTRY

MET PROLACT-P™ Multi Strain Probiotics with Enzymes

MET PROLACT-P is an advanced cocktail of selective probiotics, effective extracts and enzymes, providing support to the gut by colonizing across the digestive trace. Each of the probiotic strains in **MET PROLACT-P** offer a unique health benefit & works synergistically to deliver maximum benefits.

- Produces volatile fatty acids and metabolites having a beneficial activity against bacterial & coccidial pathogens across the gut.
- Optimizes gut health, improves digestion and hence it enhances nutrient absorption.
- Promotes and maintains better flock health with improvement in economic again.

METVITA Layer Premix

An adequate supply of vitamins is key for good poultry nutrition. Metvita Layer is specifically developed to provide optimum nutrition for poultry layers during their entire productive life through feed in real time situation.

- Improves health and growth.
- Adjust intestinal flora balance, decrease enteritis and diarrhoea, decrease use of antibiotics.
- Vitamin supplementation regulates early-stage physiological function of the birds.
- Promote and secrete all kind of digestive enzyme to improve feed digestion and increase FCR.

MENTOVA VET

A unique organic mineral mixture for poultry can significantly improve overall health, growth, and production by providing more bioavailable forms of essential minerals.

- Decrease mortality rate.
- Improve Fibrous content
- Increased breast thigh and body weight
- Better feed conversation ratio
- Immune response boosted
- Healthier and stronger generation

Good bye all **toxins...**

MET TOX

AN ADVANCED BLEND OF BROAD-SPECTRUM MULTI TOXIN BINDERS

- Mould growth and mycotoxin production by effective binding with all mycotoxins.
- Reducing mycotoxins.
- It also lowers down the pH of feed and gut with an improvement in protein digestion.
- Reduces mortality, controls secondary bacterial disease problem and vaccine failure.



- Extend laying fastigium. Increase good quality egg production 4-6%.
- Adjust hormone secretion, makes ideal egg production body, promote nutrition/calcium absorption and accumulation.
- Strengthen liver and kidney function, strengthen organism immunity and anti-stress capability.
- Keep intestinal tract microecosystem balance, decrease digestive system disease.

Met acetous+

POWERFUL COMBINATION OF MARVELLOUS ORGANIC ACID

- It contains a group of highly concentrated organic acids that can work efficiently in the alimentary tract of birds.
- It kill & destroy pathogenic bacteria present in the gut of birds especially Salmonella spp.,
- Increase the efficiency and production of some enzyme such as protease, amylase, and lipase.
- Maintain gut pH and improves gut health, thereby maintaining normal reproduction of beneficial bacteria.



CATTLE

M-FEED™

M-FEED is superior powder blend of advance & heat stable enzyme with probiotics-Prebiotics for Feed mill to complete growth and milk yield.

- Increase milk production and promote the growth rate.
- Helps in substituting Crude Fiber (CF) in the diet ratio.
- Helps to establish a favourable microflora resulting in improved feed utilization.
- Dosage: 500 gm per ton of feed



TRUEMIN-Chelate is a dairy specific, highly biological active and bioavailable glycinate chelate trace minerals. It is a formulation designed to restore good health in animals and overcome mineral deficiencies.

- Full fills Basic requirement of dairy animals.
- Improves milk production.
- Improves Conception rate (Fertility).
- Reduces somatic cell counts.
- Reduces incidence of mastitis.
- Improves hoof health & reduce lameness.
- Enhances immunity & Reduce stress.

MeteoYeast™

MeteoYeast is a probiotic yeast specially designed for rumen. MeteoYeast is fermented product of submerged Sachharomyces cerevisiae, which is isolated from rumen intestine. MeteoYeast act by promoting lactate utilizing microbial growth and restrict the lactate producing bacterial growth to stabilize the rumen pH to prevent the acidosis.

- Restore rumen microflora.
- Stabilize the rumen pH.
- Helps in weight gain.
- Increases feed conversion.

NUTRAPASS™

NUTRAPASS is a unique blend of bypass Fat and Protein fortified with Vitamins, Minerals, Yeast, and Amino acids, thereby fulfilling all the essential requirements of the animal.

- Helps in Improving milk yield and reproduction.
- Improves fat percentage in milk.
- Reduce body weight loss.
- Fulfil the nutrients requirement in high performance dairy animals.



A concentrated organic trace mineral mixture is a specialized blend of trace minerals, in organic (chelated) form, designed for incorporation into animal feed, particularly in feedmills

- Fulfils basic requirement of dairy animals.
- Improve conception rate (Fertility).
- Enhance immunity Benefits & reduce stress.
- Reduce somatic cell counts & reduce incidence of mastitis.

METEOBOOST

METEOBOOST is a formulation designed specially to boost the function of Liver and promote healthy liver.

- Helps in regeneration of liver cells & fat metabolism.
- Regulates liver function for better homeostasis mechanism.
- Acts as Hepatoprotective Mould inhibitor and mycotoxin binder.
- Improves body weight gain and FCR.
- Improves body's immunity.
- Improves Semen quality and Semen volume in breeder male.

CATTLE

LYSOMET™ Contains Microbial Lysozyme

- The rate of bacterial disease get control by more than 80% & Relapse rate of bacterial disease is below 5%.
- In cattle, it improves intestinal micro-ecological environment.
- In poultry, it restores laying ovary, improve the eggshell colour & egg rate.
- In aqua, it prevents gastroenteritis and skin disorder offish & In pets, it improve the fur quality.
- It protects against infections, acts as a natural antibiotic, and enhances the efficacy of other antibiotics, while it also strengthens the immune system.

Meteomastite™

Most Proven and Effective Product for Treatment and Prevention of Mastitis

Mastitis in dairy cattle is the persistent, inflammatory reaction of the udder tissue. Mastitis, a potentially fatal mammary gland infection, is the most common disease in dairy cattle.

These bacteria can be introduced in many different ways such as: poor milking procedures, milking machine faults, treat injuries, and direct exposure to pathogenic bacteria in the environment.

- Reduce somatic cell count in milk & Improve immunity
- Restore acidity in udder tissues
- Restore lactose, calcium and chloride in milk to normal levels



METEOLYTE

WHAT IS HEAT STRESS?

Cows generate heat by digesting feed and producing milk. They absorb solar heat when out in the sun. Heat stress occurs when cows generate and absorb more heat than they can easily get rid of by respiration, sweating and air blowing by them (wind or fans) and leads to more stress, lower milk production and a higher rate of diseases. Heat stress leads to increased respiration rates, body temperatures, sweating and time standing.

- Increased heat tolerance & Improved reproductive efficiency
- Restores electrolyte balance & Increase feed intake
- Increase milk production & conception rate in extreme heat

MetCalflow Gel Effective solution for Calcium Deficiency in Calving

- As an aid to prevent milk fever & Associated complication.
- As an aid to favor the normal contraction of uterus. Normal calving & timely expulsion of placenta. It is a Comprehensive nutritional supplement formulated to supply the essential nutrients to Dairy animals.



METCALFLOW DS Highly Concentrated with Ca, P, Trace minerals & Vitamin

- Improve Milk & Fat Yield
- Maintain Growth of cattle & calf
- Improve immunity
- Enhance reproductive performance
- Developed & protect udder
- Prevent milk fever



Truemin Buff Up

CATTLE FEED SUPPLEMENT

- Prevents conditions like lameness & diarrhoea due to acidosis.
- Improves milk constituents & Enhances nutrient utilization and milk production.
- Maintains optimum pH of the rumen and prevents rumen acidosis.